

**COME CLEAN, GO CLEAN**

- 1. WASH DOWN**
- 2. DECONTAMINATE**
- 3. FINAL RINSE**

Dirty vehicles, machinery and equipment can carry pests, diseases and weed seeds onto properties.



# AHC30318 Certificate III in Rural and Environmental Pest Management



Ballistic Training Solutions Pty Ltd

W: [www.ballistic.edu.au](http://www.ballistic.edu.au)

E: [info@ballistic.edu.au](mailto:info@ballistic.edu.au)

P: 1300 738 098

RTO: 41097



## AHC30318 – Certificate III in Rural & Environmental Pest Management

### Qualification Description

This qualification describes the skills and knowledge required for pest management contractors, pest management field officers, vertebrate pest management field officers and weed management field officers in the pest management industry.

The qualification covers those who work in weed management as well as vertebrate pest management in conservation, land management, horticulture and agriculture settings. Individuals in these roles work under general direction and:

- participate in strategic invasive species management practices
- prepare for management programs
- complete and assess management programs
- carry out weed management programs that require chemical spraying
- maintain required records.

State or territory licensing, legislative or certification requirements apply in some jurisdictions.



#### Applicable occupations are:

- Park Ranger / Wildlife Officer
- Primary producer
- Research officer
- Pest Management Specialist



### Entry Requirements

There are no entry requirements for this qualification.

### Packaging Rules

Total number of units = 14 - Core Units = 6 - Elective Units = 8

Elective units must be relevant to the work environment and the qualification, maintain the integrity of the AQF alignment and contribute to a valid, industry-supported vocational outcome.

For the award of **Certificate III in Rural and Environmental Pest Management** the electives are to be chosen as follows:

- 6 units must be selected from the elective groups A, B, C, D or E
- Up to 2 units from the remaining electives or any currently endorsed Training Package or accredited course packaged to reflect AQF Certificate II, III or IV outcomes.

Where appropriate, electives may be packaged to provide a qualification with a specialisation.

For the award of **Certificate III in Rural and Environmental Pest Management (Pest animal controller)** the electives are to be chosen as follows:

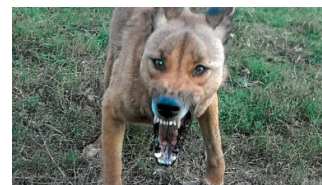
- 5 units must be selected from the elective group A
- 1 unit must be selected from the elective group C or E
- 2 units must be selected from remaining electives in group C and E or any currently endorsed Training Package or accredited course packaged to reflect AQF Certificate II, III or IV outcomes.

For the award of **Certificate III in Rural and Environmental Pest Management (Weed Controller)** the electives are to be chosen as follows:

- 2 units must be selected from the electives group B
- 1 unit, AHC BIO201 Inspect and clean machinery for plant, animal and soil material, must be selected
- 3 units must be selected from the elective group D or E
- 2 units must be selected from remaining group D or E or any currently endorsed Training Package or accredited course packaged to reflect AQF Certificate II, III or IV outcomes.







## Unit Descriptions

| CODE      | UNIT   | CORE / ELECTIVE | GROUP |
|-----------|--|-----------------|-------|
| AHCCHM304 | Transport and store chemicals  | Core            | Core  |
| AHCCHM307 | Prepare and apply chemicals to control pest, weeds and diseases                      | Core            | Core  |
| AHCPMG203 | Work effectively in a pest management environment                                    | Core            | Core  |
| AHCPMG306 | Determine pest control techniques  | Core            | Core  |
| AHCPMG308 | Implement pest management strategies   | Core            | Core  |
| AHCWHS301 | Contribute to work health and safety processes                                       | Core            | Core  |
| AHCFAU201 | Recognise fauna  | Elective        | A     |
| AHCPMG304 | Use firearms to humanely destroy animals   | Elective        | A     |
| AHCPMG307 | Apply animal trapping techniques   | Elective        | A     |
| AHCPMG309 | Apply pest animal control techniques   | Elective        | A     |
| AHCPMG312 | Apply poison baits for vertebrate pest control in rural and environmental landscapes | Elective        | A     |
| AHCPCM303 | Identify plant specimens   | Elective        | B     |
| AHCPMG301 | Control weeds  | Elective        | B     |
| AHCPMG414 | Apply predator trapping techniques   | Elective        | C     |
| AHCPMG311 | Use firearms for pest control activities from aircraft                               | Elective        | C     |
| AHCPCM202 | Collect, prepare and preserve plant specimens  | Elective        | D     |
| AHCBIO201 | Inspect and clean machinery for plant, animal and soil material                      | Elective        | E     |
| AHCMOM304 | Operate machinery and equipment  | Elective        | E     |
| AHCNAR306 | Conduct photography for fieldwork  | Elective        | E     |
| AHCNAR307 | Read and interpret maps  | Elective        | E     |
| AHCPMG302 | Control plant pests, diseases and disorders  | Elective        | E     |
| AHCPMG305 | Survey pests   | Elective        | E     |
| AHCPMG413 | Define the pest problem  | Elective        | E     |
| AHCWRK309 | Apply environmentally sustainable work practices                                     | Elective        | E     |
| AHCWRK311 | Conduct site inspections   | Elective        | E     |
| HLTAID003 | Provide first aid  | Elective        | E     |

## Course Duration

12 Months tailored depending on Participant requirements. Options include Student Self-Paced Workbook and Project Delivery supported by ongoing Trainer/Assessor Assistance, worksite workshop delivery linked to worksite operational employment activities supported by Trainer/Assessor visits. Each clients requirements being considered, some homework activity and student time management will be important to ensure we maintain the volume of learning requirements on this qualification. 12 Months can be extended by the student through an application process.

